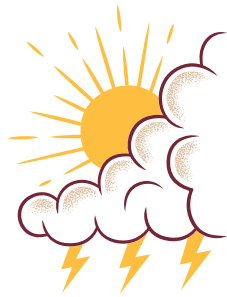




# PLANET EARTH QUIZ



If you get stuck, you'll find some helpful clues in Chapter 2 of *Britannica All New Children's Encyclopedia - Updated Edition*



## Question 1:

How old is planet Earth?



- 13.8 billion years old
- 4.6 billion years old
- 4,004 years old
- 2,020 years old



## Question 2:

What name did scientists give to the planet that smashed into the early Earth and may have given our planet its tilt?



- Gaea
- Pangea
- Titan
- Theia

## Question 3:

Earth's magnetic field protects the planet from:



- Comets
- Meteorites
- Acid rain
- Solar wind



## Question 4:

Three-quarters of Earth's volcanoes exist in a chain surrounding which ocean?



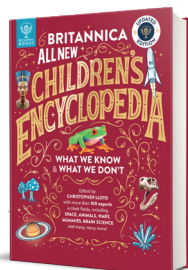
- Pacific
- Atlantic
- Indian
- Arctic

## Question 5:

About how many earthquakes does Earth experience each year?



- 500
- 5,000
- 50,000
- 500,000



## Question 6:

*Nyasaosaurus* is famous for being:



- The largest dinosaur
- The smallest dinosaur
- The oldest dinosaur
- The newest dinosaur

## Question 7:

About 650 million years ago Earth was covered with ice. This period in our planet's history is known as:



- Snowball Earth
- Icicle Earth
- Cryogenic Earth
- Deep-freeze Earth



## Question 8:

Which of these is NOT a type of mountain?

- Fold mountain
- Block mountain
- Dome mountain
- Blob mountain



## Question 9:

What is the scientific name for fluffy white clouds?

- Cumulus
- Cirrus
- Stratus
- Fluffus



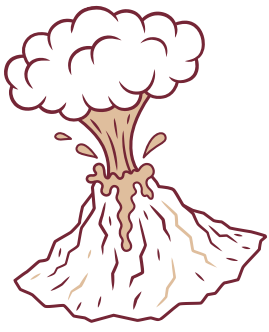
## Question 10:

Who holds the world record for the longest ever free-fall jump through the atmosphere?



- Felix Baumgartner
- Alan Eustace
- Eddie the Eagle
- Evel Knievel





# PLANET EARTH WORDSEARCH



J R M B U A E G N P L P M H V Z D B T A  
 T Y C I A H M I X I G B V W B A C A X Y  
 F S Z H E B A I S Q O T O I M V S X W P  
 E R U H G T K S N O L F E W Q P C M A W  
 Q O W N N B O W O K D T Z V C O A E M N  
 E H N U A F K V S H I X C U W G Z O N E  
 S G O A P M G E T A L P C I N O T C E T  
 A M N P C L I W E E O Q O E Y O V F N P  
 T S J A A L X G B C C Z T C V H P V C E  
 C G O C H U O O B P K O N R H R U E Y Y  
 J P I M F C B V F W S T A Y C E E D D C  
 D E H O J U E K N P Z Z C S J N C X K H  
 R T H E I A V T H H O S J T A A U F X N  
 S U L U M U C E A K N J Q A T C I Y M C  
 D I C F J J R D W M E B B L O I D Y W E  
 I I Z M W E T Z T R I T T H P R Q R E H  
 F R A C K I N G T X X L Z A C R Q F N H  
 I T N Y M V Q O Y W J A C Y C U Q T I M  
 Y Q J F K R L A H H A B S M H H Y O X J  
 V S F L D N R P G M D K M E E G K M K H

Can you find all of these words relating to planet Earth?

They can be found going up, down, diagonal, side to side and backwards!

**CLIMATE CHANGE**

**CRYSTAL**

**CUMULUS**

**FOSSIL**

**FRACKING**

**GLACIER**

**GOLDDILOCKS ZONE**

**HURRICANE**

**MAGNETOSPHERE**

**MOUNTAIN**

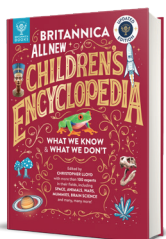
**PANGEA**

**TECTONIC PLATE**

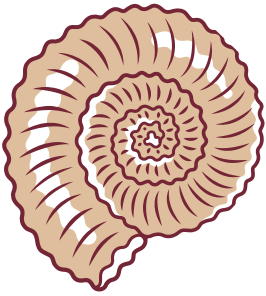
**THEIA**

**TSUNAMI**

**VOLCANO**



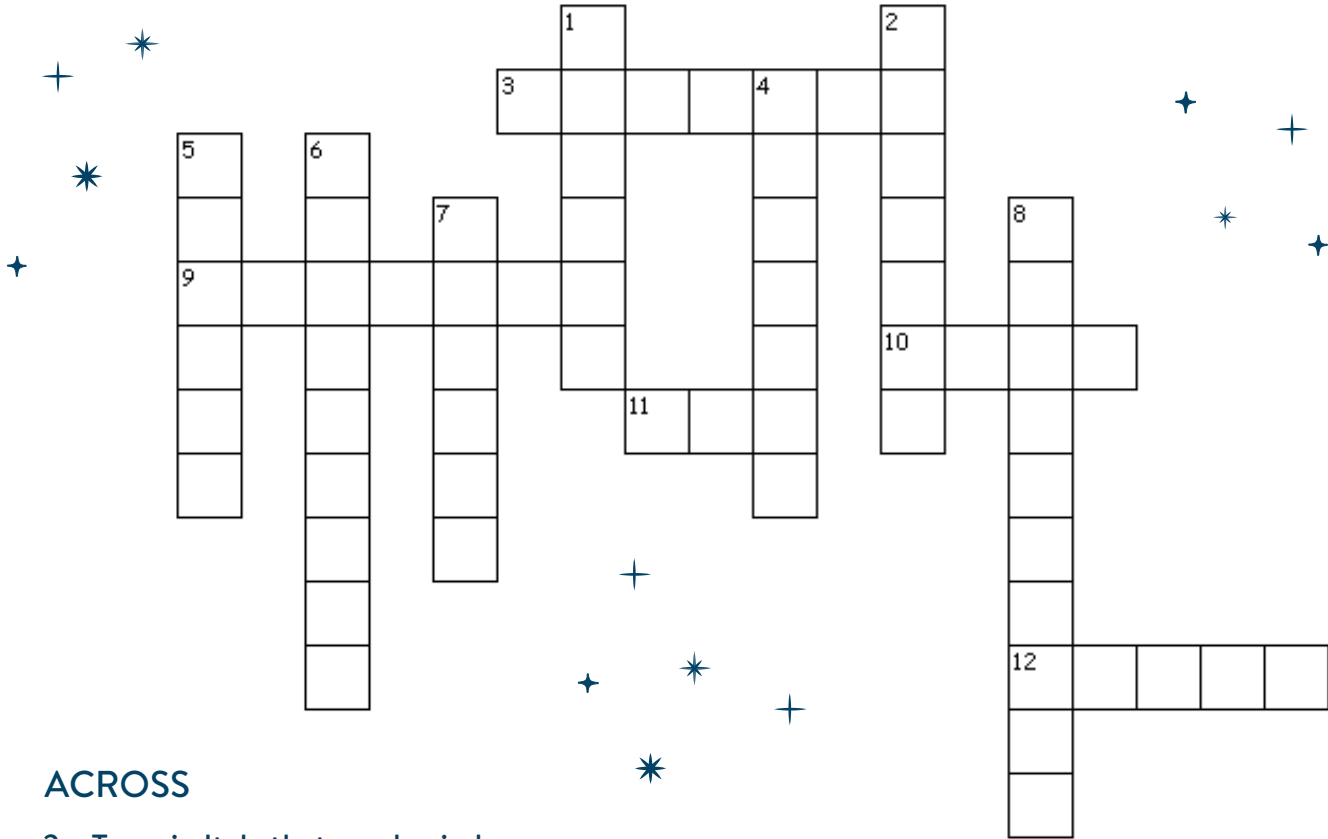
You can find lots more information about these words in  
Chapter 2 of *Britannica All New Children's Encyclopedia - Updated Edition*



# PLANET EARTH CROSSWORD



All of these facts are taken from Chapter 2  
of *Britannica All New Children's Encyclopedia - Updated Edition*

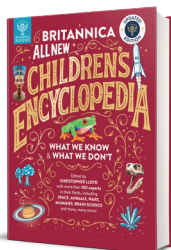


## ACROSS

- 3 Town in Italy that was buried by ash from Mount Vesuvius in 79 CE (7)
- 9 A giant wave that is set off by a volcano or an earthquake (7)
- 10 The longest river in the world, located in Egypt (4)
- 11 Letters that stand for the network of satellites that can pinpoint your location very precisely (3)
- 12 The top layer of planet Earth, also the part of toast that you sometimes cut off! (5)

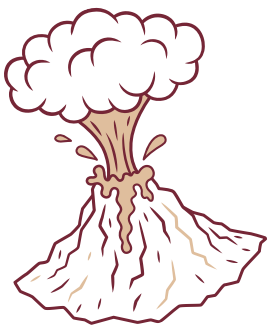
## DOWN

- 1 The remains of ancient life that are preserved in rock, often hard bits of animals such as shells (6)
- 2 A precious gem formed by extreme pressure 160km under the surface of the Earth (7)
- 4 Mount \_\_\_\_\_, the highest mountain in the world, found in the Himalayas (7)
- 5 The most common fuel used to power a car (5)
- 6 Fizzy drink cans are made from this metal (9)
- 7 The world's largest hot desert, located in Africa (6)
- 8 The name scientists give to the zone that is the right distance from the sun for life to thrive on a planet. Also a character from a fairy tale about three bears and their porridge (10)



[whatonearthbooks.com](http://whatonearthbooks.com)

ANSWERS: Across - 3. Pompeii, 9. Tsunami, 10. Nile, 11. GPS, 12. Crust  
Down - 1. Fossil, 2. Diamond, 4. Everest, 5. Petro, 6. Aluminium, 7. Sahara, 8. Goldilocks



# PLANET EARTH WORDSEARCH ANSWERS



J	R	M	B	U	A	E	G	N	P	L	P	M	H	V	Z	D	B	T	A
T	Y	C	I	A	H	M	I	X	I	G	B	V	W	B	A	C	A	X	Y
F	S	Z	H	E	B	A	I	S	Q	O	T	O	I	M	V	S	X	W	P
E	R	U	H	G	T	K	S	N	O	L	F	E	W	Q	P	C	M	A	W
Q	O	W	N	N	B	O	W	O	K	D	T	Z	V	C	O	A	E	M	N
E	H	N	U	A	F	K	V	S	H	I	X	C	U	W	G	Z	O	N	E
S	G	O	A	P	M	G	E	T	A	L	P	C	I	N	O	T	C	E	T
A	M	N	P	C	L	I	W	E	E	O	Q	O	E	Y	O	V	F	N	P
T	S	J	A	A	L	X	G	B	C	C	Z	T	C	V	H	P	V	C	E
C	G	O	C	H	U	O	O	B	P	K	O	N	R	H	R	U	E	Y	Y
J	P	I	M	F	C	B	V	F	W	S	T	A	Y	C	E	E	D	D	C
D	E	H	O	J	U	E	K	N	P	Z	Z	C	S	J	N	C	X	K	H
R	T	H	E	I	A	V	T	H	H	O	S	J	T	A	A	U	F	X	N
S	U	L	U	M	U	C	E	A	K	N	J	Q	A	T	C	I	Y	M	C
D	I	C	F	J	J	R	D	W	M	E	B	B	L	O	I	D	Y	W	E
I	I	Z	M	W	E	T	Z	T	R	I	T	T	H	P	R	Q	R	E	H
F	R	A	C	K	I	N	G	T	X	X	L	Z	A	C	R	Q	F	N	H
I	T	N	Y	M	V	Q	O	Y	W	J	A	C	Y	C	U	Q	T	I	M
Y	Q	J	F	K	R	L	A	H	H	A	B	S	M	H	H	Y	O	X	J
V	S	F	L	D	N	R	P	G	M	D	K	M	E	E	G	K	M	K	H

Can you find all of these words relating to planet Earth?

They can be found going up, down, diagonal, side to side and backwards!

CLIMATE CHANGE

GLACIER

PANGEA

CRYSTAL

GOLDBLOCKS ZONE

TECTONIC PLATE

CUMULUS

HURRICANE

THEIA

FOSSIL

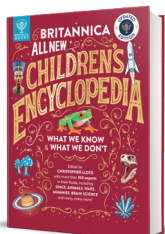
MAGNETOSPHERE

TSUNAMI

FRACKING

MOUNTAIN

VOLCANO



You can find lots more information about these words in  
Chapter 2 of *Britannica All New Children's Encyclopedia - Updated Edition*