

NATURE & ANIMALS QUIZ



If you get stuck, you'll find some helpful clues in Chapter 4 of *Britannica All New Children's Encyclopedia - Updated Edition*



Question 1:

During the first two billion years of Earth's history our planet had very little:

- Water
- Oxygen
- Land
- Life



Question 2:

What is the scientific term for classifying, or categorizing, living things?



- Taxonomy
- Taxidermy
- Taxology
- Taxation

Question 3:

What makes the raft spider special?



- It can weave webs of gold
- It can jump extremely high
- It can kill rats
- It can walk on water



Question 4:

Where is the nival zone located?



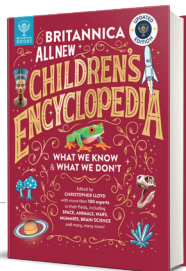
- Deep under the oceans
- High up on mountains
- In the hottest parts of deserts
- On ice caps

Question 5:

Climbers have found rocks at the top of Mount Everest containing fossilized:



- Shark teeth
- Sea lilies
- Dinosaur bones
- Weevils



Question 6:

The banded archerfish knocks its insect prey off hanging branches by:



- Throwing twigs
- Singing songs
- Spitting water
- Leaping through the air



Question 7:

About how many human cells could fit on the head of a pin?

- 10
- 100
- 1,000
- 10,000



Question 8:

Mudskippers are fish that:



- Get oxygen through their skin
- Sleep on the seafloor
- Dig tunnels underground
- Hop on one fin

Question 9:

Some female anglerfish can:



- Produce their own light
- Walk on the bottom of the ocean
- Breathe on land
- Grow their own food



Question 10:

An *aurochs* was a type of wild:

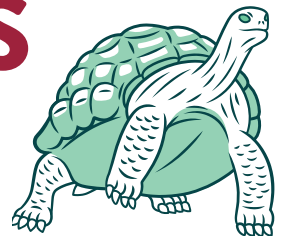


- Pig
- Horse
- Ox
- Ostrich





NATURE & ANIMALS WORDSEARCH



M	T	C	N	I	T	X	E	X	F	V	N	B	I	J	T	P	U	U	H
O	I	H	T	K	G	S	Y	E	K	E	X	O	Z	O	A	I	V	N	I
H	Q	C	I	C	T	T	E	A	X	R	V	I	I	G	H	L	P	Y	Q
Y	S	G	R	G	E	R	T	N	G	T	F	K	I	T	D	C	Y	O	B
M	M	Q	H	O	L	S	Q	S	G	E	G	A	L	F	U	O	M	A	C
E	P	I	Q	A	O	M	N	F	G	B	T	Q	R	H	C	L	R	T	G
T	Q	G	R	Z	W	R	A	I	R	R	Z	X	O	F	Z	S	O	U	K
S	U	O	G	L	V	R	G	A	Z	A	P	T	C	Z	F	Z	W	V	I
Y	C	O	A	P	M	T	I	A	Q	T	C	S	K	Q	O	W	A	B	E
S	L	D	Z	I	F	N	X	V	N	E	L	E	P	F	O	Q	U	D	X
O	M	V	N	N	F	M	B	T	Q	I	V	V	O	L	O	D	W	Q	E
C	D	G	N	O	V	H	S	J	A	C	S	N	O	I	V	X	W	F	M
E	H	E	R	B	I	V	O	R	E	X	G	M	L	W	F	S	A	O	L
J	H	E	D	S	I	Z	I	M	O	C	O	L	G	H	T	F	C	M	I
F	S	Y	N	T	G	Q	W	N	R	G	Z	N	N	D	W	O	U	I	P
T	T	N	T	V	N	X	S	L	E	V	H	R	O	R	X	O	S	K	M
S	V	F	P	Y	U	V	S	Z	H	J	O	H	H	M	A	Y	J	M	F
K	G	I	O	W	F	U	K	M	T	C	R	D	R	Y	Y	G	F	F	K
G	O	R	V	V	O	Q	B	S	C	K	Y	X	N	Q	X	G	B	N	A
X	J	Z	C	R	G	C	I	K	A	B	T	F	N	C	K	K	W	Q	J

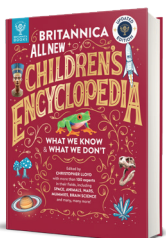
Can you find all of these words relating to the natural world?
They can be found going up, down, diagonal, side to side and backwards!

CAMOUFLAGE
CORAL REEF
ECOSYSTEM
EVOLUTION
EXTINCT

FARMING
FUNGI
HERBIVORE
INSECT
MICROORGANISM

RAINFOREST
ROCKPOOL
TAIGA
TAXONOMY
VERTEBRATE

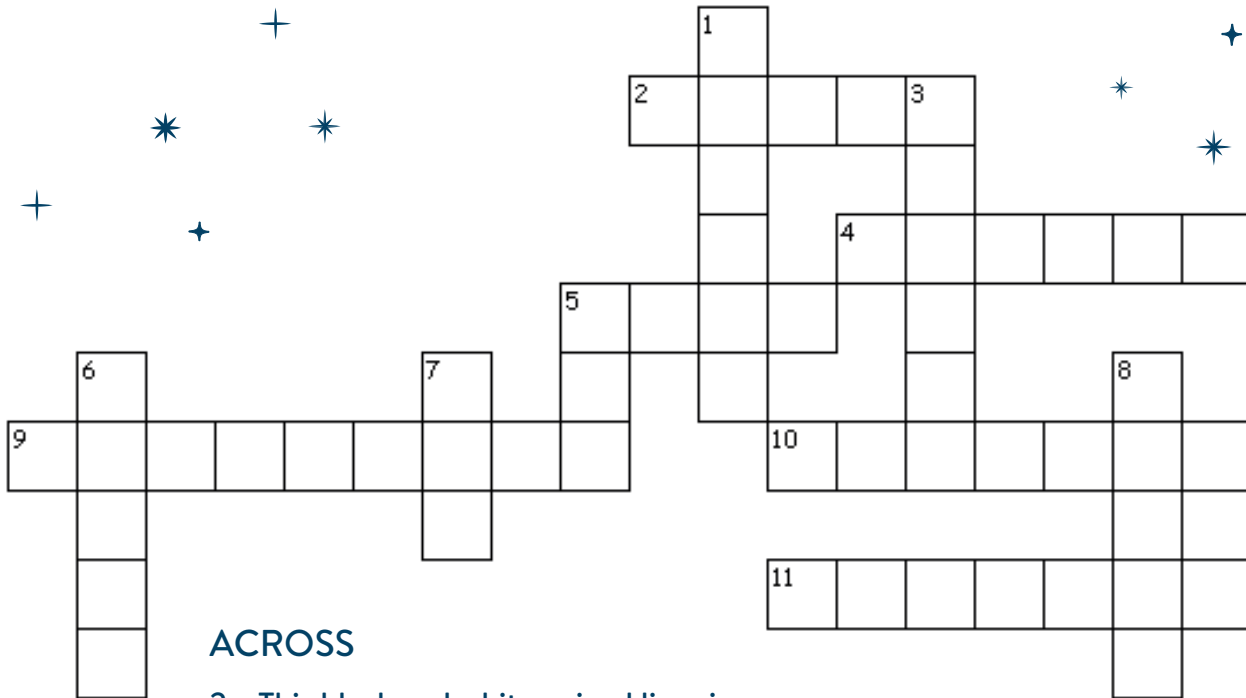
You can find lots more information about these words in
Chapter 4 of *Britannica All New Children's Encyclopedia - Updated Edition*



NATURE & ANIMALS CROSSWORD



All of these facts are taken from Chapter 4
of *Britannica All New Children's Encyclopedia - Updated Edition*

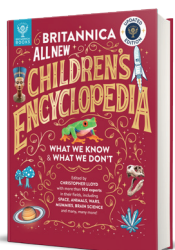


ACROSS

- 2 This black and white animal lives in China and eats bamboo (5)
- 4 Scientist whose theory that all living things, including humans evolved through natural selection shocked the world, Charles _____ (6)
- 5 This type of whale is the largest animal in the world – it can grow to be the length of three and a half London double decker buses! (4)
- 9 The name for an animal that only eats plants (9)
- 10 Aquatic bird. The males of one Antarctic species look after the egg by balancing it on their feet, while the mummy goes off to catch fish (7)
- 11 A creature with eight tentacles that lives in the sea (7)

DOWN

- 1 A prickly plant that can live in the desert with very little water (6)
- 3 The world's largest rainforest, found in South America (6)
- 5 This insect pollinates flowers, makes honey and can also sting you! (3)
- 6 Another black and white animal, closely related to a horse (5)
- 7 This common household pet comes in hundreds of different breeds, that all evolved from one ancient species of wolf (3)
- 8 These infectious agents can cause diseases such as flu, chickenpox, measles and Covid-19 (5)

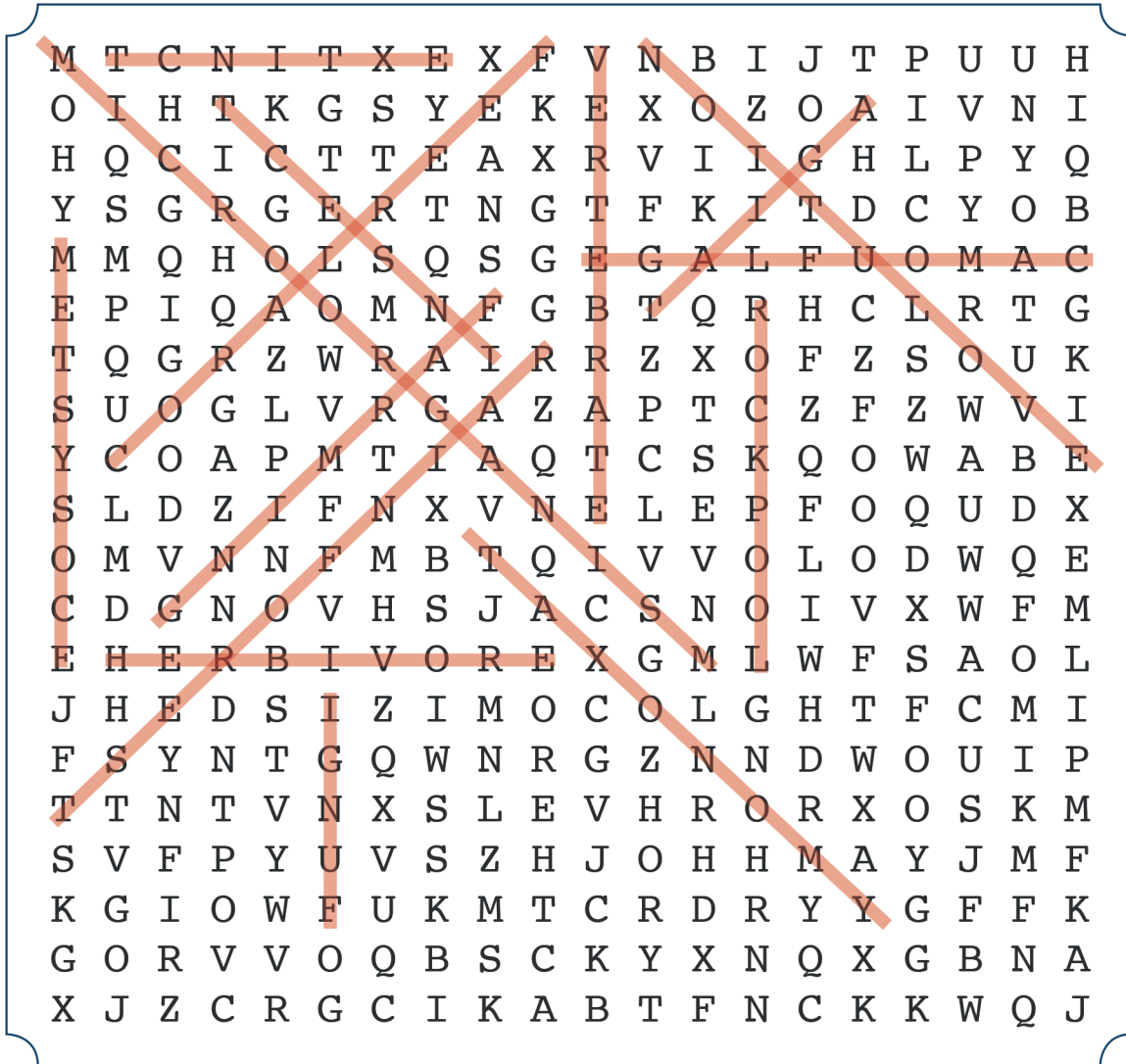
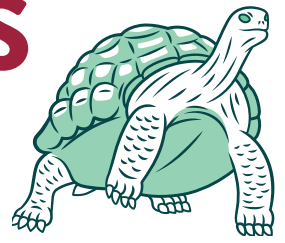




NATURE & ANIMALS

WORDSEARCH

ANSWERS

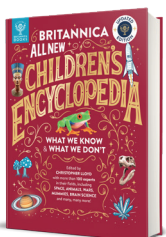


Can you find all of these words relating to the natural world?
 They can be found going up, down, diagonal, side to side and backwards!

CAMOUFLAGE
 CORAL REEF
 ECOSYSTEM
 EVOLUTION
 EXTINCT

FARMING
 FUNGI
 HERBIVORE
 INSECT
 MICROORGANISM

RAINFOREST
 ROCKPOOL
 TAIGA
 TAXONOMY
 VERTEBRATE



You can find lots more information about these words in
 Chapter 4 of *Britannica All New Children's Encyclopedia - Updated Edition*