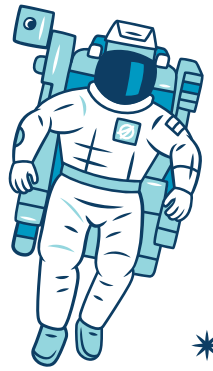




# THE UNIVERSE QUIZ

If you get stuck, you'll find some helpful clues in Chapter 1 of the *Britannica All New Kids' Encyclopedia*



## Question 1:

Which of the following elements were the only two that existed soon after the Universe formed?

- Hydrogen and helium
- Hydrogen and oxygen
- Carbon and hydrogen
- Helium and oxygen

## Question 6:

In which year was the Hubble Space Telescope launched?

- 1980
- 1990
- 2000
- 2010

## Question 7:

The asteroid belt lies between which two planets?

- Jupiter and Saturn
- Mars and Saturn
- Saturn and Neptune
- Mars and Jupiter

## Question 8:

Saturn's moon Titan has liquid running over its surface. This liquid is similar to:

- Water
- Slime
- Ectoplasm
- Gasoline

## Question 9:

Up to how many people at a time live on the International Space Station?

- 3
- 6
- 12
- 24

## Question 10:

Which of the following is NOT the name of a theory about how the Universe will end?

- The Big Crunch
- The Big Freeze
- The Big Dipper
- The Big Rip

## Question 2:

What is the opposite of matter?

- Negative matter
- Antimatter
- Zeromatter
- No matter

## Question 3:

Planet Earth is located in which spiral arm of the Milky Way galaxy?

- The Orion Arm
- The Perseus Arm
- The Major Arm
- The Norma Arm

## Question 4:

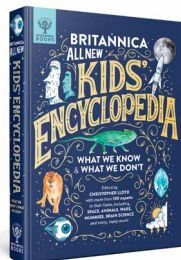
Approximately how long does one complete rotation of the Milky Way take?

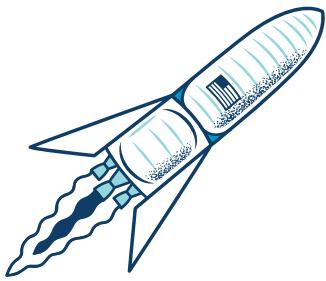
- 24 years
- 240 years
- 24,000 years
- 240 million years

## Question 5:

What scientific instrument was first used by ancient Greek astronomers to map stars in the night sky?

- Telescope
- Astrolabe
- Orrery
- Oracle





# THE UNIVERSE WORDSEARCH

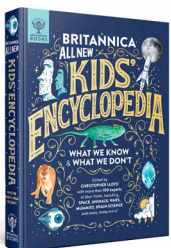


D	R	T	N	B	G	K	X	V	P	E	R	M	I	R	B	T	R	P	S
I	O	O	O	T	K	M	B	W	X	E	T	I	L	L	E	T	A	S	U
O	C	G	I	L	P	F	S	O	U	E	O	N	I	L	M	I	M	R	P
R	K	X	T	S	A	O	P	A	A	M	U	B	N	K	D	D	E	Y	E
E	E	D	A	L	P	L	Q	L	E	O	Q	R	D	D	U	B	Z	S	R
T	T	U	L	W	A	A	U	S	O	L	A	R	S	Y	S	T	E	M	N
S	C	S	L	N	Z	B	C	B	P	L	O	J	V	E	O	X	D	Z	O
A	L	P	E	F	E	I	M	E	L	I	W	H	H	L	G	W	H	T	V
T	K	T	T	N	V	R	P	E	C	K	I	U	K	N	C	E	W	U	A
Y	Y	W	S	F	M	V	T	D	B	R	J	I	Z	C	T	Z	N	J	X
T	T	J	N	O	F	S	E	T	S	I	A	V	F	O	A	K	T	D	U
W	G	B	O	A	R	L	U	W	N	J	E	F	M	S	Z	L	B	G	O
I	O	N	C	E	C	L	I	P	S	E	G	Z	T	P	M	J	B	C	V
L	V	X	T	F	Z	I	J	B	D	G	X	A	C	K	P	N	U	S	P
F	Z	N	L	M	F	E	K	H	Z	H	B	K	L	Q	P	G	S	J	Q
A	I	J	Z	O	F	C	E	E	C	H	T	T	M	A	F	J	I	Q	B
C	J	Z	Z	U	H	R	T	D	Q	R	X	M	I	T	X	H	L	E	F
O	G	N	H	A	S	M	K	A	E	B	C	B	C	Q	R	Y	O	E	W
U	U	S	P	O	Y	H	D	N	N	I	V	H	B	L	S	F	W	Q	R
G	I	U	P	G	F	U	Z	J	H	G	O	V	I	C	N	V	C	Z	O

Can you find all these Universe related words?

They can be found going up, down, diagonal, side to side and backwards!

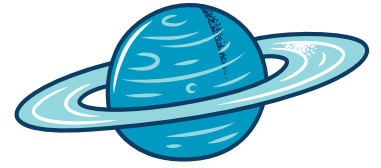
- |               |              |              |
|---------------|--------------|--------------|
| ASTEROID      | GALAXY       | SATELLITE    |
| BLACK HOLE    | INTERSTELLAR | SOLAR SYSTEM |
| CONSTELLATION | MOON         | SPACECRAFT   |
| ECLIPSE       | NEBULAE      | SUN          |
| EXOPLANET     | ROCKET       | SUPERNOVA    |



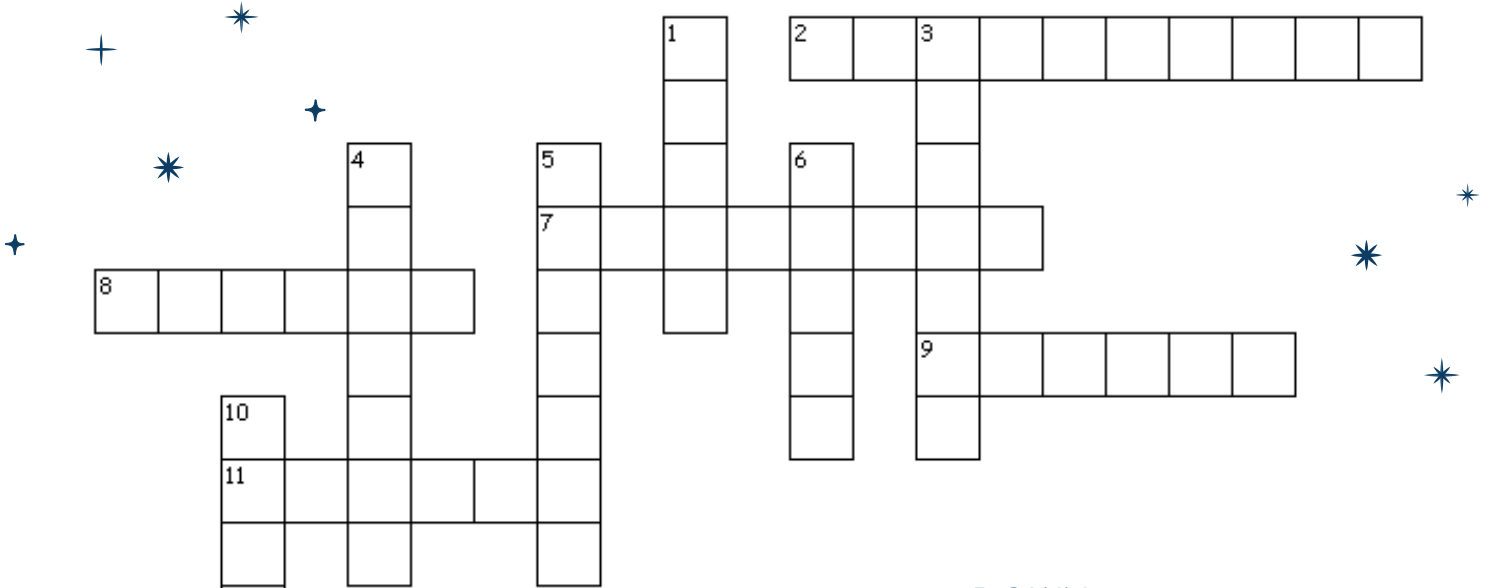
You can find lots more information about these words in Chapter 1 of the *Britannica All New Kids' Encyclopedia*



# THE UNIVERSE CROSSWORD



All these facts are taken from Chapter 1 of the  
*Britannica All New Kids' Encyclopedia*



## ACROSS

- 2 Theory of how the universe began (3,3,4)
- 7 Scientists believe that this caused the extinction of the dinosaurs! (8)
- 8 The most famous space telescope (6)
- 9 This planet is most famous for its huge ring system (6)
- 11 This successful Apollo Mission landed the first man on the moon (6)
- 12 A NASA rover is looking for signs of life on this red planet (4)

## DOWN

- 1 Dwarf planet that was previously a planet until 2006 (5)
- 3 This occurs when the Moon passes between the Earth and the Sun (7)
- 4 The first scientist to use a telescope to view the stars, his first and last names are almost the same! (7)
- 5 This British scientist, Stephen \_\_\_\_\_ deepened our understanding of black holes (7)
- 6 This constellation has three stars that form a belt (5)
- 10 The closest planet to our Sun (7)
- 12 Spiral galaxy and a chocolate bar (5,3)

